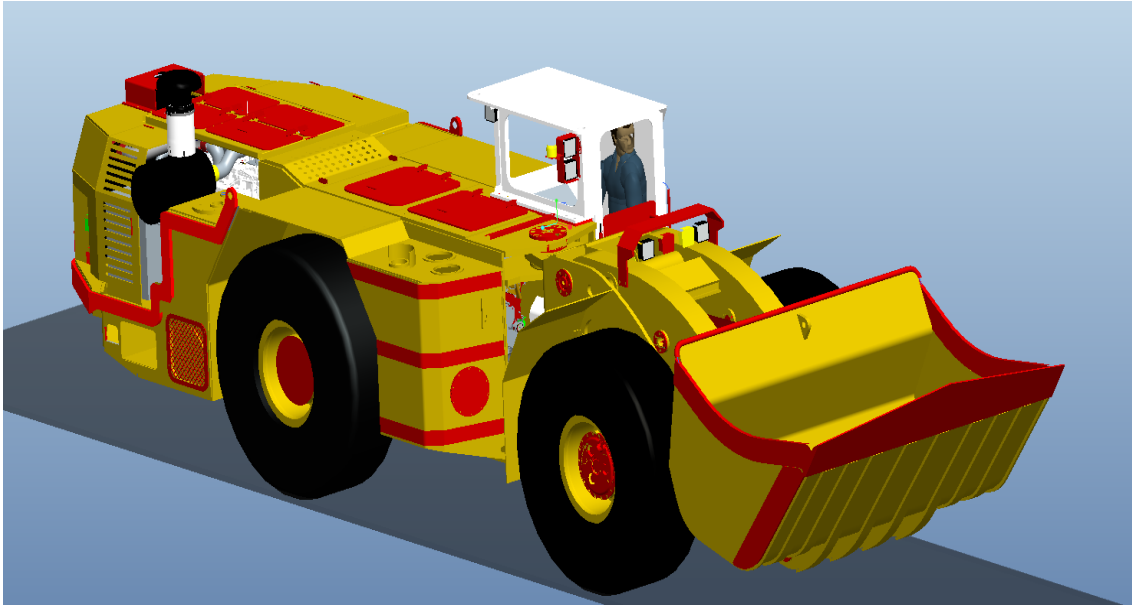


WJ-4.5 DIESEL DRIVE UNDERGROUND WHEEL LOADER



Main dimensions

Length:	9718 mm
Width:	2320 mm
Loading height (Full load)	1840 mm 3574 mm
Cabin height	2390~2450 mm
Max. unload angle	40°
Shovel volume (Heap)	5 m ³

Weight

Machine weight	25,300 kg
Tramming	10,000 kg

Travelling capacity

Maximum speed

Fully loaded Advance/Reverse, no slope

1 gear	4.0 km/h
2 gear	8.3 km/h
3 gear	15.4 km/h
4 gear	25.0 km/h

Maximum grade ability 25%

Maximum traction force 217 kN

Engine

Manufacturer	VOLVO
Model	TAD1150VE (tire 3) TAD1140VE (tire 2)
Air inlet	Dry air filter
Exhaust outlet	Catalyst exhaust purifier+silencer

Drive system

Converter		
Model:	Series 5000	DANA
Transmission		
Model:	Series 36000	DANA
Design	Fully automatic with CAN-bus transmission, 4 speed advance/reverse	
Drive axle		
Front axle	20D	DANA

Type: With anti-slip auto-lock differential rigid planetary axle

Rear axle 20D DANA

Type: With differential rigid planetary axle

Swinging angle $\pm 10^\circ$

➤ **Options: Kessler+CO D102**

Rim/Tire

Rim size 13.00-25/2.5

Tire size 18.00-25

Tire inflation pressure Front 0 ± 0.1 bar / Rear 3.5 ± 0.1 bar

Brakes

Braking system SAHR

Service brake Wet multi-discs external cooling, all hydraulic operation

Braking pressure 110 bar

Parking brake/Emergency brake Spring brake, hydraulic release on 4 wheels

Parking capability Safety brake with full load on 25% slope

Steering

Type: All hydraulic power steering

Swinging angle $\pm 40^\circ$

Turning radius (external) 6650 ± 250 mm

Turning radius (Inner) 3345 ± 250 mm

OPTIONS:

- Engine: VOLVO TAD1150VE or TAD853VE water-cooled diesel engine.
Cummins QSL9-C300 224 KW/2100rpm (Eu III emission standard)
- Sealed cabin with heater and air-conditioner;
- Automatic central lubrication
- Automatic & Manual fire suppression system
- Radio & Video system
- Remote control system

kamach@kamach.com

If clients have any preference for the main components please confirm with us.

