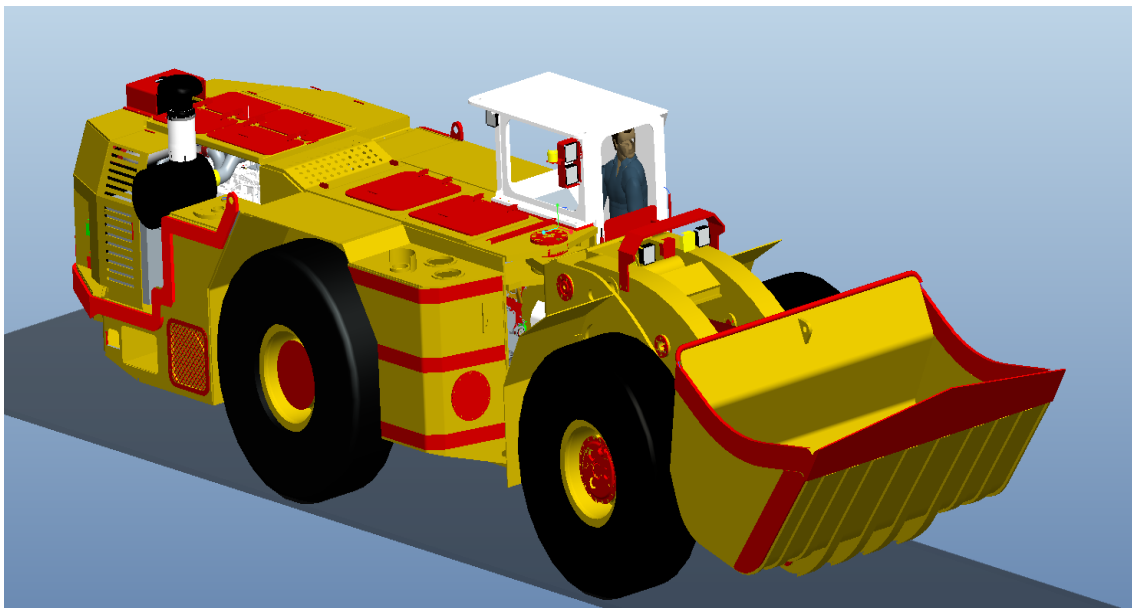


## WJ-4.5 DIESEL DRIVE UNDERGROUND WHEEL LOADER



### Main dimensions

Length:	9718 mm
Width:	2320 mm
Loading height (Full load)	1840 mm   3574 mm
Cabin height	2390~2450 mm
Max. unload angle	40°
Shovel volume (Heap)	4.5 m <sup>3</sup>

### Weight

Machine weight	25,300 kg
Tramming	10,000 kg

### Travelling capacity

Maximum speed

Fully loaded Advance/Reverse, no slope

1 gear	4.0 km/h
2 gear	8.3 km/h
3 gear	15.4 km/h
4 gear	25.0 km/h
Maximum grade ability	25%
Maximum traction force	217 kN

## Engine

Manufacturer	DEUTZ
Model	BF6M1013FC
Type	Water-cooled diesel engine
Power installed	223 kW/2300 rpm
Max. torque output	806 Nm/2100 rpm
Air inlet	Dry air filter
Exhaust outlet	Catalyst exhaust purifier+silencer

## Drive system

Converter

Model: Series 5000 DANA

Transmission

Model: Series 36000 DANA

Design Fully automatic with CAN-bus transmission,  
4 speed advance/reverse

## Drive axle

Front axle 20D DANA

Type: With anti-slip auto-lock differential rigid planetary axle

Rear axle 20D DANA

Type: With differential rigid planetary axle

Swinging angle  $\pm 10^\circ$

➤ **Options: Kessler+CO D102**

## Rim/Tire

Rim size 13.00-25/2.5

Tire size 18.00-25

Tire inflation pressure Front  $0 \pm 0.1$  bar / Rear  $3.5 \pm 0.1$  bar

## Brakes

Braking system SAHR

Service brake Wet multi-discs external cooling, all hydraulic operation

Braking pressure 110 bar

Parking brake/Emergency brake Spring brake, hydraulic release on 4 wheels

Parking capability Safety brake with full load on 25% slope

## Steering

Type: All hydraulic power steering

Swinging angle  $\pm 40^\circ$

Turning radius (external)  $6650 \pm 250$  mm

Turning radius (Inner)  $3345 \pm 250$  mm

## OPTIONS:

- Engine: VOLVO TAD1150VE or TAD853VE water-cooled diesel engine.  
Cummins QSL9-C300 224 KW/2100rpm (Eu III emission standard)
- Sealed cabin with heater and air-conditioner;
- Automatic central lubrication
- Automatic & Manual fire suppression system
- Radio & Video system
- Remote control system

kamach@kamach.com

If clients have any preference for the main components please confirm with us.

